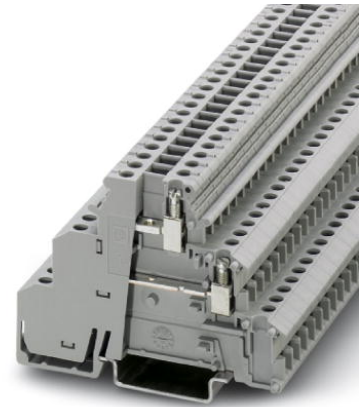


## DIKD 1,5-2D

Order No.: 2716512



<http://eshop.phoenixcontact.de/phoenix/treeViewClick.do?UID=2716512>

Three-level initiator terminal block, cross section: 0.2 - 2.5 mm<sup>2</sup>, AWG:  
30 - 14, width: 6.2 mm, color: gray

### Commercial data

|                          |                    |
|--------------------------|--------------------|
| EAN                      | 4017918061951      |
| Pack                     | 50 Pcs.            |
| Customs tariff           | 85369010           |
| Weight/Piece             | 0.015992 KG        |
| Catalog page information | Page 295 (CL-2007) |

### Product notes

WEEE/RoHS-compliant since:  
01/01/2003



<http://www.download.phoenixcontact.com>  
Please note that the data given here has been taken from the online catalog. For comprehensive information and data, please refer to the user documentation. The General Terms and Conditions of Use apply to Internet downloads.

### Technical data

#### General

|                                    |      |
|------------------------------------|------|
| Number of levels                   | 3    |
| Number of connections              | 6    |
| Color                              | gray |
| Insulating material                | PA   |
| Inflammability class acc. to UL 94 | V2   |

**Dimensions**

|                  |         |
|------------------|---------|
| Width            | 6.2 mm  |
| Length           | 72.5 mm |
| Height NS 35/7,5 | 54.5 mm |
| Height NS 35/15  | 62 mm   |

**Technical data**

|                                  |               |
|----------------------------------|---------------|
| Rated surge voltage              | 4 kV          |
| Pollution degree                 | 3             |
| Surge voltage category           | III           |
| Insulating material group        | I             |
| Connection in acc. with standard | IEC 60947-7-1 |
| Nominal current $I_N$            | 24 A          |
| Nominal voltage $U_N$            | 250 V         |

**Connection data**

|                                                                                       |                      |
|---------------------------------------------------------------------------------------|----------------------|
| Conductor cross section solid min.                                                    | 0.2 mm <sup>2</sup>  |
| Conductor cross section solid max.                                                    | 4 mm <sup>2</sup>    |
| Conductor cross section stranded min.                                                 | 0.2 mm <sup>2</sup>  |
| Conductor cross section stranded max.                                                 | 2.5 mm <sup>2</sup>  |
| Conductor cross section AWG/kcmil min.                                                | 24                   |
| Conductor cross section AWG/kcmil max                                                 | 12                   |
| Conductor cross section stranded, with ferrule without plastic sleeve min.            | 0.25 mm <sup>2</sup> |
| Conductor cross section stranded, with ferrule without plastic sleeve max.            | 2.5 mm <sup>2</sup>  |
| Conductor cross section stranded, with ferrule with plastic sleeve min.               | 0.25 mm <sup>2</sup> |
| Conductor cross section stranded, with ferrule with plastic sleeve max.               | 2.5 mm <sup>2</sup>  |
| 2 conductors with same cross section, solid min.                                      | 0.2 mm <sup>2</sup>  |
| 2 conductors with same cross section, solid max.                                      | 1 mm <sup>2</sup>    |
| 2 conductors with same cross section, stranded min.                                   | 0.2 mm <sup>2</sup>  |
| 2 conductors with same cross section, stranded max.                                   | 1 mm <sup>2</sup>    |
| 2 conductors with same cross section, stranded, ferrules without plastic sleeve, min. | 0.25 mm <sup>2</sup> |

|                                                                                         |                     |
|-----------------------------------------------------------------------------------------|---------------------|
| 2 conductors with same cross section, stranded, ferrules without plastic sleeve, max.   | 1 mm <sup>2</sup>   |
| 2 conductors with same cross section, stranded, TWIN ferrules with plastic sleeve, min. | 0.5 mm <sup>2</sup> |
| 2 conductors with same cross section, stranded, TWIN ferrules with plastic sleeve, max. | 1 mm <sup>2</sup>   |
| Cross-section with insertion bridge, solid max.                                         | 4 mm <sup>2</sup>   |
| Cross-section with insertion bridge, stranded max.                                      | 2.5 mm <sup>2</sup> |
| Type of connection                                                                      | Screw connection    |
| Stripping length                                                                        | 8 mm                |
| Internal cylindrical gage                                                               | A3                  |
| Screw thread                                                                            | M 3                 |
| Tightening torque, min                                                                  | 0.5 Nm              |
| Tightening torque max                                                                   | 0.6 Nm              |

### Certificates / Approvals



### requested approbations

|               |      |
|---------------|------|
| Certification | GOST |
|---------------|------|

### Accessories

| Item            | Designation                 | Description                                                                                                                                                                         |
|-----------------|-----------------------------|-------------------------------------------------------------------------------------------------------------------------------------------------------------------------------------|
| <b>Assembly</b> |                             |                                                                                                                                                                                     |
| 1413285         | ATP-DIKD 1,5                | Partition plate, for visual and electrical separation of terminal groups, width: 2 mm, color: gray                                                                                  |
| 3022218         | CLIPFIX 35                  | Snap-on end bracket, for 35 mm NS 35/7.5 or NS 35/15 mounting rail, can be fitted with Zack strip ZB 8 and ZB 8/27, terminal strip marker KLM 2 and KLM, width: 9.5 mm, color: gray |
| 1201413         | E/UK 1                      | End brackets, for supporting the ends of double-level and three-level terminal blocks, width: 10 mm, color: gray                                                                    |
| 0801762         | NS 35/ 7,5 CU UNPERF 2000MM | DIN rail, material: Copper, unperforated, height 7.5 mm, width 35 mm, length: 2 m                                                                                                   |
| 0801733         | NS 35/ 7,5 PERF 2000MM      | DIN rail, material: Steel, perforated, height 7.5 mm, width 35 mm, length: 2 m                                                                                                      |
| 0801681         | NS 35/ 7,5 UNPERF 2000MM    | DIN rail, material: Steel, unperforated, height 7.5 mm, width 35 mm, length: 2 m                                                                                                    |

|         |                            |                                                                                                                           |
|---------|----------------------------|---------------------------------------------------------------------------------------------------------------------------|
| 1201756 | NS 35/15 AL UNPERF 2000MM  | DIN rail, deep-drawn, high profile, unperforated, 1.5 mm thick, material: Aluminum, height 15 mm, width 35 mm, length 2 m |
| 1201895 | NS 35/15 CU UNPERF 2000MM  | DIN rail, material: Copper, unperforated, 1.5 mm thick, height 15 mm, width 35 mm, length: 2 m                            |
| 1201730 | NS 35/15 PERF 2000MM       | DIN rail, material: Steel, perforated, height 15 mm, width 35 mm, length: 2 m                                             |
| 1201714 | NS 35/15 UNPERF 2000MM     | DIN rail, material: Steel, unperforated, height 15 mm, width 35 mm, length: 2 m                                           |
| 1201798 | NS 35/15-2,3 UNPERF 2000MM | DIN rail, material: Steel, unperforated, 2.3 mm thick, height 15 mm, width 35 mm, length: 2 m                             |

**Bridges**

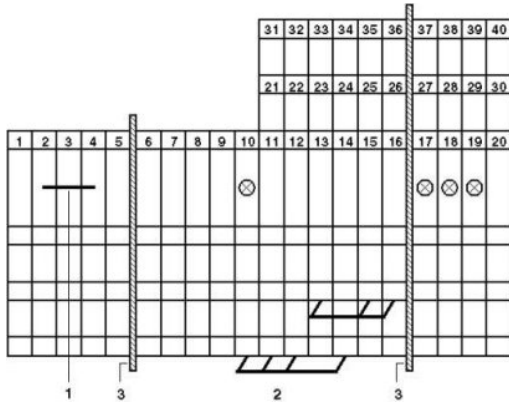
|         |               |                                                                                                |
|---------|---------------|------------------------------------------------------------------------------------------------|
| 2716680 | EB 10- DIK BU | Insertion bridge, for middle and bottom level, 10-pos., color of the insulating material: blue |
| 2715937 | EB 10- DIK GY | Insertion bridge, for middle and bottom level, 10-pos., color of the insulating material: gray |
| 2716774 | EB 10- DIK RD | Insertion bridge, for middle and bottom level, 10-pos., color of the insulating material: red  |
| 2715940 | EB 80- DIK BU | Insertion bridge, divisible, for middle and bottom level, 80-pos., insulating material: Blue   |
| 2715953 | EB 80- DIK RD | Insertion bridge, divisible, for middle and bottom level, 80-pos., insulating material: Red    |
| 2715788 | EB 80- DIK WH | Insertion bridge, divisible, for middle and bottom level, 80-pos., insulating material: White  |
| 0203250 | FBI 10- 6     | Fixed bridge, 10-pos., screw heads with insulating collar, divisible, with screws              |
| 0201650 | FBI 100- 6    | Fixed bridge, 100-pos.                                                                         |
| 0201867 | FBI 20- 6     | Fixed bridge, 20-pos.                                                                          |

**Marking**

|         |                         |                                                                                                                                                     |
|---------|-------------------------|-----------------------------------------------------------------------------------------------------------------------------------------------------|
| 1007222 | SBS 6:UNBEDRUCKT        | Marker cards for modular terminal blocks, color: white                                                                                              |
| 0804374 | SK 6,2/3,8:FORTL.ZAHLEN | Marker card, printed horizontally, self-adhesive, 12 identical decades marked 1-10, 11-20 etc. up to 91-(99)100, sufficient for 120 terminal blocks |
| 1050499 | ZB 6:SO/CMS             | Zack strip, 10-section, divisible, special printing, marking according to customer requirements                                                     |

## Drawings

### Circuit diagram



- 1 = fixed bridge
- 2 = insertion bridge
- 3 = partition plate

**Address**

PHOENIX CONTACT Inc., USA  
586 Fulling Mill Road  
Middletown, PA 17057, USA  
Phone (800) 888-7388  
Fax (717) 944-1625  
<http://www.phoenixcon.com>



© 2008 Phoenix Contact  
Technical modifications reserved;